

## EPA proposes Site to NPL

The U.S. Environmental Protection Agency (EPA), in collaboration with the Delaware Department of Natural Resources and Environmental Control (DNREC), completed its site inspection of the East Basin Road Groundwater Site. The inspection concluded that the site requires further investigation and may require long-term clean-up.

**EPA will propose the site to the National Priorities List (NPL) on September 9, 2022.**

The NPL is a list of the most serious identified sites that require long-term investigation and clean-up under EPA's Superfund program. When a site is proposed to the NPL, EPA publishes a rule in Federal Register about its intention and notifies the community. EPA is holding a 60-day comment period that allows community members to comment on the proposal. The State of Delaware has concurred on the proposal.



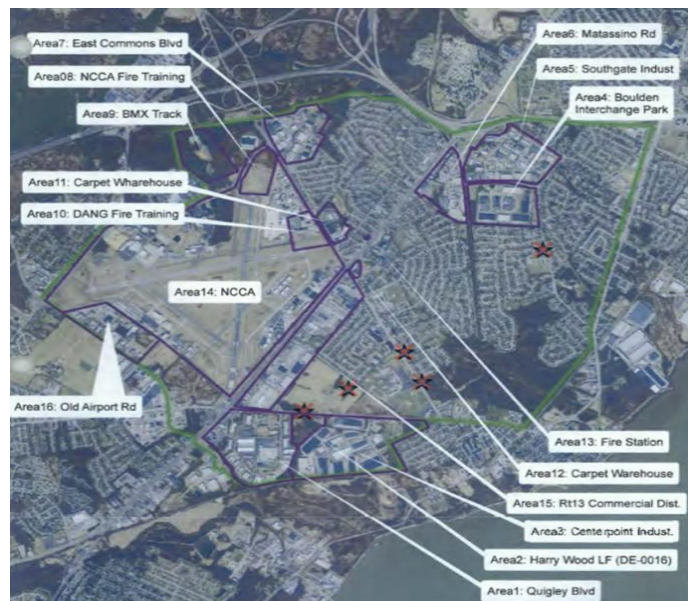
### EPA would like to hear from you!

EPA will be holding a 60-day public comment period from September 9 to November 8, 2022.

Comments can be submitted one of two ways:

Online: <http://www.regulations.gov>  
Search for "EPA-HQ-OLEM-2022-0679"

Mail: U.S. Environmental Protection Agency  
EPA Docket Center, Superfund Docket  
Docket # EPA-HQ-OLEM-2022-0679  
Mailcode 28221T  
1200 Pennsylvania Avenue NW  
Washington, DC 2046



East Basin Road Groundwater Site

## Next Steps

Following the comment period, EPA will respond to public comments received. If the site still qualifies for cleanup under Superfund, the site is formally listed on the NPL by final rule, to be published in the Federal Register in the Spring 2023. The site would then become a Superfund Site and be eligible for federal financial assistance and long-term cleanup. EPA will continue to keep the New Castle community informed throughout the NPL proposal process.

## Additional Resources



For more information about the site, visit the website or scan QR Code with your smartphone. please open the camera app on your smartphone. Move your camera so the QR code is in the frame and able to be scanned. Hold the device steady until the camera app can read the code:

<http://www.epa.gov/superfund/eastbasin>

## Questions? Please contact us!

**Conor O'Loughlin**  
EPA Site Assessment Manager  
215-814-3304  
[oloughlin.conor@epa.gov](mailto:oloughlin.conor@epa.gov)

**Akudo Ejelonu**  
EPA Community Involvement Coordinator  
215-814-5536  
[ejelonu.akudo@epa.gov](mailto:ejelonu.akudo@epa.gov)

## What Has Been Done at the Site to Date?

EPA and DNREC completed a preliminary assessment, site inspection, and an expanded site inspection of widespread groundwater contamination in New Castle, DE. The groundwater contamination is located in the vicinity of the New Castle County Airport, which includes the New Castle Air National Guard Base and the Duncan Readiness Center and Army Aviation Support facilities which both lease land at the airport. The State of Delaware requested EPA list the site on the NPL due to the resources available under EPA's Superfund program, which includes the ability to be able to identify responsible parties and determine the source of groundwater contamination.

**Several public drinking water wells have been impacted by per-and polyfluoroalkyl substances (PFAS) and volatile organic compound (VOC) contamination. The local water providers operate treatment systems that provide water to their customers that meet all State and Federal drinking water standards for regulated and unregulated contaminants. The provider's water treatment systems have been shown to be effective in reducing the unregulated PFAS contamination concentrations.**

The treated water meets the proposed State of Delaware Department of Health and Social Services, Division of Public Health drinking water maximum contaminant level (MCL) for the PFAS compounds PFOA and PFOS.

## Site Background

The East Basin Road Groundwater Site is a groundwater plume(s) that is impacting 11 public wells within multiple wellhead protection areas owned by Artesian Water Company and the New Castle Municipal Services Commission. The wells serve approximately 209,000 people and are located within the 5,000-acre area-wide investigation.

The site investigation area included facilities in and around the Wilmington-New Castle Airport, six industrial parks, three fire training areas, two carpet warehouses, one fire station and two commercial districts.

## Please Join Us for a Public Information Session About the Proposal

### In-Person

**Tuesday, October 4**

**6:00pm to 8:00pm**

Route 9 Library & Innovation Center  
3022 New Castle Ave  
New Castle, DE 19720

### Virtual

**Thursday, October 6**

**6:00pm to 8:00pm**

To join click the following meeting link:

<https://usepa.zoomgov.com/j/1616572991>

Meeting ID: 161 657 2991

Or Dial in:

Dial by your location

+1 669 254 5252 US (San Jose)

+1 646 828 7666 US (New York)

+1 669 216 1590 US (San Jose)

+1 551 285 1373 US

Meeting ID: 161 657 2991

## Additional Resources

For more information about EPA's Superfund Program: [www.epa.gov/superfund](http://www.epa.gov/superfund)

This is Superfund: A Community Guide to EPA's Superfund Program:

<https://semspub.epa.gov/src/document/11/175197>

## ¿Preguntas? Contáctenos

Nancy Cruz

Coordinadora de Participación Comunitaria de la EPA

(215) 814-5518

[cruz.nancy@epa.gov](mailto:cruz.nancy@epa.gov)